



BOAT SHADE

SHADEFIN® PRODUCTS BROCHURE

The ShadeFin family of products offers anglers, boaters and families personalize boat shade for a variety of marine applications.



SHADEFIN® MINI

SHADE FOR EVERY ANGLE

ShadeFin Mini provides boaters, anglers and families with portable, convenient and easy-to-use shade with virtually unlimited angle adjustment. With a variety of mounting options, ShadeFin Mini is simple to setup wherever you need extra protection from the sun.



SHADE FOR ANY BOAT

ShadeFin Mini is ideal for bass boats, flats boats, bay boats, kayaks, pontoons, skiffs and any boat with limited-to-no coverage from the sun. Its versatile design and hearty construction ensures reliable, hassle-free shade protection that can withstand the harsh marine environment.

SHADEFIN® MINI KITS

PART NUMBER	DESCRIPTION
T10-4000-1	ShadeFin® Mini with White Fabric & Bag
T10-4000-2	ShadeFin® Mini with Black Fabric & Bag
T10-4000-3	ShadeFin® Mini with White Fabric, Bag & Swivel Seat Mount Kit
T10-4000-4	ShadeFin® Mini with Black Fabric, Bag & Swivel Seat Mount Kit
T10-4000-5	ShadeFin® Mini with White Fabric, Bag & Square Rail Mount Kit
T10-4000-6	ShadeFin® Mini with Black Fabric, Bag & Square Rail Mount Kit
T10-4000-16	ShadeFin® Mini with White Fabric, Bag & Round Rail Mount Kit
T10-4000-17	ShadeFin® Mini with Black Fabric, Bag & Round Rail Mount Kit
T10-4000-18	ShadeFin® Mini with White Fabric, Bag & Kayak Mount
T10-4000-19	ShadeFin® Mini with Black Fabric, Bag & Kayak Mount



ADDITIONAL MOUNTS

ShadeFin Mini is available as a kit with either a Swivel Seat Mount, Round Rail Mount, Square Rail Mount or Kayak Mount, and pairs with five additional sold-separately mounts, including a Clamp Mount, Semi Flush Mount, Deck Mount, Rod Holder Mount and Side Wall Mount.



PROTECTIVE MESH STORAGE SLEEVE

A protective mesh storage sleeve comes standard with the ShadeFin Mini for convenient transportation and storage. *Take the guesswork out of sun protection with ShadeFin Mini – the only personalized boat shade you need for a great day on the water. #ShadeForEveryAngle*

MOUNTING OPTIONS

CLAMP MOUNT

T10-4000-7

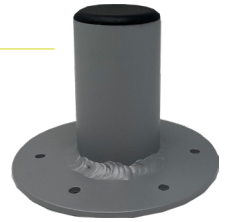
- Easily installed to most railing sizes
- Includes two screws that can be securely tightened
- Constructed out of aluminum grade-6061 alloys with two threaded stainless steel Type-304 clamping rods
- Includes injection-molded nylon cap and knobs



DECK MOUNT

T10-4000-8

- Includes six mounting screws for installation
- Powder-coated aluminum 6061 alloy
- Includes injection-molded nylon cap
- Includes backing plate and mounting hardware



SQUARE & ROUND RAIL MOUNTS

T10-4000-9 & T10-4000-15

- T10-4000-9 fits square rail from 1" to 1-1/2" O.D.
- T10-4000-15 fits round rail from 7/8" to 1" O.D.
- Constructed out of aluminum grade-6061 alloys with stainless steel Type-304 screws
- Includes mounting hardware
- Includes injection-molded nylon cap



SIDE WALL MOUNT

T10-4000-12

- Ideal for consoles, side walls, gunnel walls or deck railing of boats
- Constructed out of aluminum grade-6061 alloys and stainless steel Type-304
- Includes injection-molded nylon cap
- Includes backing plate and mounting hardware



SEMI-FLUSH MOUNT

T10-4000-10

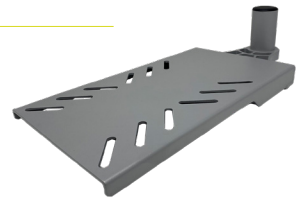
- Features removable locking ring and post for storage
- Constructed out of aluminum grade-6061 alloys with stainless steel Type-304 screws
- Includes injection-molded nylon cap
- Includes backing plate and mounting hardware



SWIVEL SEAT MOUNT

T10-4000-13

- Ideal for bass boats, skiffs, flats boats or any boat that utilizes a swivel seat for fishing and fun
- Constructed out of aluminum grade-6061 alloys
- Fits standard 4-screw swivel boat seats
- Includes injection-molded nylon cap



KAYAK MOUNT

T10-4000-14

- Powder coated aluminum
- Includes well nuts and mounting hardware
- Adjustable base up to 26.75" wide





SHADEFIN®

SHADOW IN SECONDS

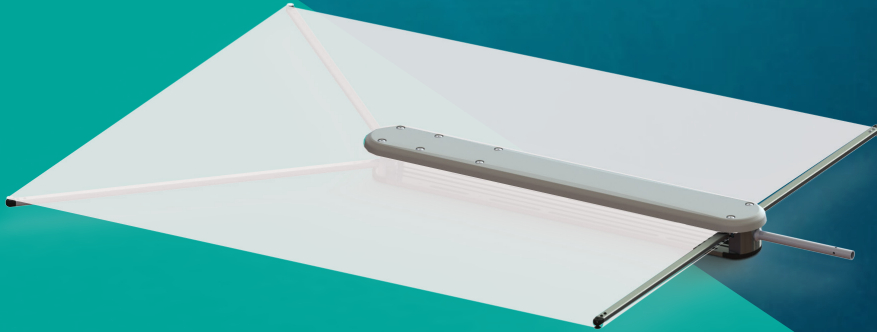


Add an extra layer of sun protection with ShadeFin by TACO Marine – a product that easily attaches into rod holders, tops and gunnels for convenient, portable shade for almost any boat.

Patent No. 10,604,214; 11,220,312

OCEAN-INSPIRED DESIGN

ShadeFin's ocean-inspired design provides expanded shade coverage for multiple areas of the boat, including fore, aft and sides of tops or anywhere there is a rod holder. ShadeFin's 5' X 6' fabric provides an excellent UPF 50+ rating of sun protection while boating and fishing, or when relaxing at the dock and sand bar.



SHADE FOR ALL ACTIVITIES

To anticipate the needs of many boaters, ShadeFin pairs with either a Fixed or Adjustable Rod Holder Mount, which insert into any standard T-top rod holder or into a gunnel rod holder with an adapter, the Grand Slam 170 Outrigger or 170-2 Center Rigger Mounts, or with a Fixed or Adjustable Clamp-On Mount for pipe or tube. ShadeFin also works with a Telescopic Rod Holder Accessory for extended coverage right from the gunnel. ShadeFin's body houses the ribs and material and is offered in black or white.

PROTECTIVE MESH STORAGE SLEEVE

A protective mesh storage sleeve comes standard with the 12-pound ShadeFin. To operate ShadeFin, remove the sleeve, mount to a desired location onboard and activate the underside release tabs. Structural ribs attached to weather-resistant sun-protecting fabric expand out from the body to lock the fin in place.



MOUNTS & ACCESSORIES FOR TOPS, PIPES & ROD HOLDERS

ShadeFin comes as a kit with a Fixed Rod Holder Mount and Gunnel Rod Holder Adapter, or individually without a mount or adapter and sold-separately mounting options.

FIXED ROD HOLDER MOUNT

T10-3000-5

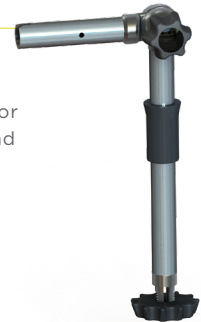
- ▶ Type-304 stainless steel
- ▶ Features bottom locking knob for secure rod holder placement
- ▶ Features white nylon sleeve for additional rod holder stabilization
- ▶ Patent pending



ADJUSTABLE ROD HOLDER MOUNT

T10-3000-6

- ▶ Type-316L stainless steel
- ▶ Features bottom locking knob for secure rod holder placement and top Sure-Grip knob for secure angle adjustment
- ▶ Adjusts up and down every 15° with safety detents
- ▶ Patent pending



ADJUSTABLE CLAMP-ON MOUNT FOR 3/4" TO 1" PIPE, 1-1/4" TUBE

T10-3000-7

- ▶ Type-316L stainless steel
- ▶ Features Sure-Grip knob for easy and secure angle adjustment
- ▶ Adjusts up and down every 15° with safety detents
- ▶ Patent # 7309054 B2



FIXED CLAMP-ON MOUNT FOR 3/4" & 1" PIPE, 1-1/4" TUBE

T10-3000-11

- ▶ Easily installed on your existing T-top piping
- ▶ Type-316L stainless steel
- ▶ Includes self-aligning notch and pin-locking hole
- ▶ Patent # 7309054 B2



GRAND SLAM OUTRIGGER OR CENTER RIGGER MOUNT

GS-170 & GS-170-2

- ▶ Stainless-steel and Anodized Aluminum construction
- ▶ Sure-Grip knob allows lift adjustments every 18°
- ▶ Locking lever secures out-bound rotation to desired location



GUNNEL ROD HOLDER ADAPTER

T10-3000-12

- ▶ Designed to pair with the Fixed or Adjustable Rod Holder Mounts to fit in any standard gunnel rod holder
- ▶ 1-1/2" O.D. X 13.5" L
- ▶ Anodized aluminum finish



TELESCOPIC ROD HOLDER ACCESSORY

T10-3000-9

- ▶ Features Sure-Grip Knob at the joint with a secure Pull Pin Lock
- ▶ Features a throw latch for secure height adjustment from 42" to 67"
- ▶ Features solid aluminum gimbal butt and internal Delrin bearings
- ▶ Pairs with T10-3000-5 or T10-3000-6 at the top, sold separately



SHADEFIN KITS

PART NUMBER	DESCRIPTION
T10-3000-1	ShadeFin® w/ White Fabric & Bag (No Mount)
T10-3000-2	ShadeFin® w/ Black Fabric & Bag (No Mount)
T10-3000-3	ShadeFin® w/ White Fabric, Bag & Fixed Rod Holder Mount Kit
T10-3000-4	ShadeFin® w/ Black Fabric, Bag & Fixed Rod Holder Mount Kit



TACO[®]
MARINE



PATRICK

Discover more about ShadeFin[®] family of products on our Website.

TACOMARINE.COM

[f](#) [@](#) [@tacomarine](#) [X](#) [@taco_marine](#)

#SHADEFIN